

# NetBak Replicator

Applies to version 4.5.0

## Contents

1	Notice .....	1
2	Install NetBak Replicator .....	2
2.1	System Requirements .....	2
2.2	Software Installation .....	2
2.3	Silent installation by command line .....	8
3	Using NetBak Replicator .....	9
3.1	First Time wizard: .....	9
3.2	Simple Mode .....	9
3.3	Instant Backup .....	11
3.4	Instant Restore .....	16
3.5	Advanced Mode .....	17
3.5.1	Auto-Backup .....	18
3.5.2	Schedule Backup .....	20
3.5.3	Instant Backup .....	21
3.5.4	Instant Restore .....	22
3.6	Options .....	22
3.7	Tray Icon Management .....	25
3.8	Exit NetBak Replicator .....	25
4	Technical Support .....	26

## 1 Notice

Thank you for choosing QNAP products! This user manual provides detailed instructions of using NetBak Replicator. Please read carefully and start to enjoy the powerful functions of NetBak Replicator!

## Legal Notices

©Copyright 2015. QNAP Systems, Inc. All Rights Reserved.

All the features, functionality, and other product specifications are subject to change without prior notice or obligation. Information contained herein is subject to change without notice.

QNAP and the QNAP logo are trademarks of QNAP Systems, Inc. All other brands and product names referred to are trademarks of their respective holders.

Further, the ® or ™ symbols are not used in the text.

## **DISCLAIMER**

In no event shall the liability of QNAP Systems, Inc. (QNAP) exceed the price paid for the product from direct, indirect, special, incidental, or consequential software, or its documentation. QNAP makes no warranty or representation, expressed, implied, or statutory, with respect to its products or the contents or use of this documentation and all accompanying software, and specifically disclaims its quality, performance, merchantability, or fitness for any particular purpose. QNAP reserves the right to revise or update its products, software, or documentation without obligation to notify any individual or entity.

Back up your system periodically to avoid any potential data loss. QNAP disclaims any responsibility of all sorts of data loss or recovery.

Should you return any components of the NAS package for refund or maintenance, make sure they are carefully packed for shipping. Any form of damages due to improper packaging will not be compensated.

## **2 Install NetBak Replicator**

### **2.1 System Requirements**

- Windows 10, 8.1, Windows 8, Windows 7, Vista, XP (SP3)
- Windows Server 2012 R2, Windows Server 2012, Windows Server 2008 R2
- 1 GHz or faster processor (x86 32-bit or x86 64-bit)
- 1 GB RAM (32-bit) or 2 GB RAM (64-bit)

### **2.2 Software Installation**

Follow these steps to install NetBak Replicator.

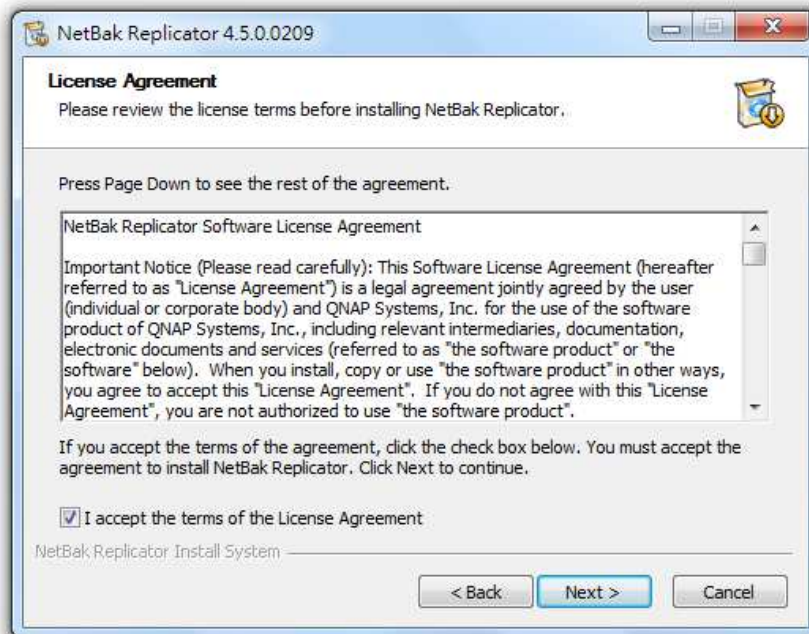
1. You can download and install NetBak Replicator from the QNAP website (<http://www.qnap.com>), or install it from the product CD-ROM (if applicable).
2. Select a language and click "OK".



3. When the NetBak Replicator Setup Wizard is shown, click "Next".

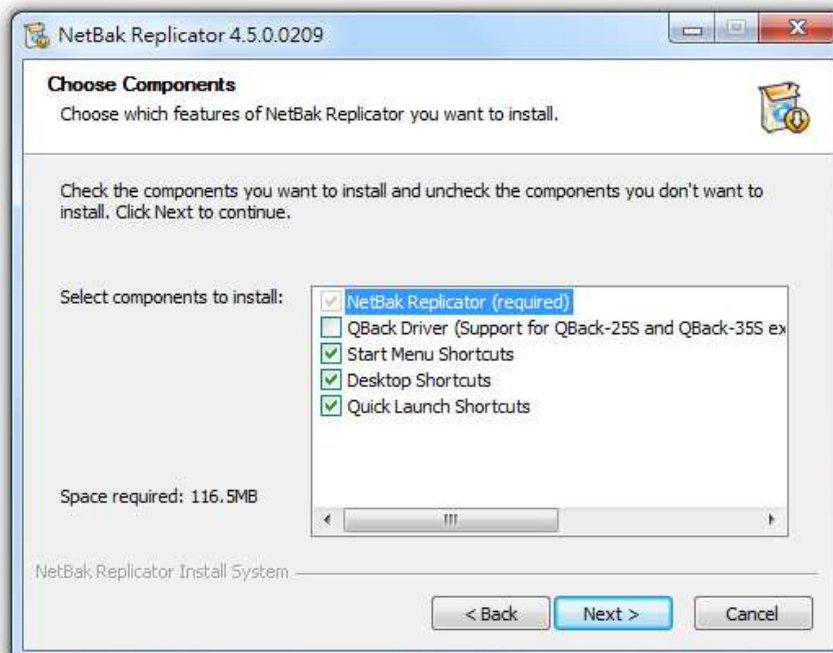


4. You must read and agree to the License Agreement before installing the software.

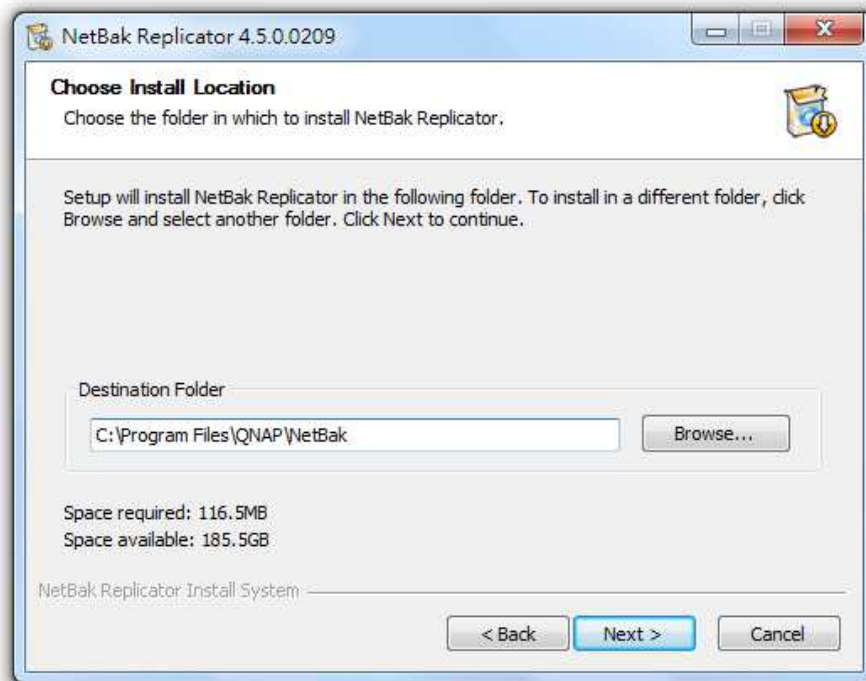


5. Select the features to install and click "Next".

The QBack Driver is ONLY necessary if you are using the QBack S-25 and QBack S-35 external USB drive as a backup destination.



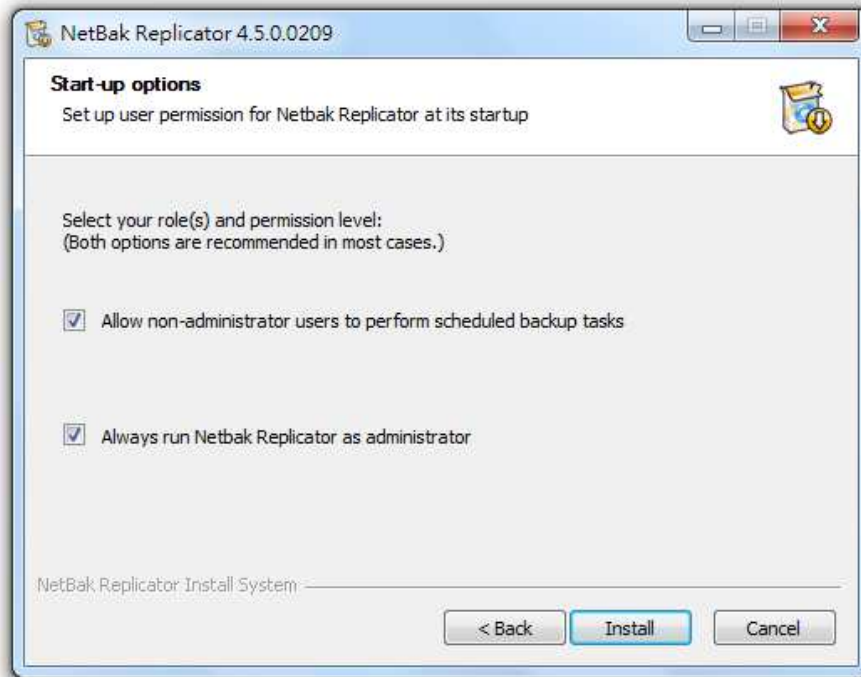
6. Select the install location and click "Install". Please note that NetBak Replicator must be installed in a local drive of your computer.



7. Select additional Options:

- Allow non-administrator users to perform scheduled backup tasks
- Always run NetBak Replicator as administrator.

Both options are checked by default and will fit most of cases (described below).



- Allow non-administrator users to perform scheduled backup tasks

(If unchecked non-administrator users cannot run schedule backup but can run instant backup)

This option allows non-administrator users to perform scheduled backup tasks by using Windows Task Scheduler. Windows security does not allow non-administrator users to perform scheduled tasks by default. If this option is checked, NetBak will change the setting automatically for local users only.

This setting can be change manually in Windows from the Local Policies setting or by GPO and granting the users the right to "logon as batch job". Reference:

<http://technet.microsoft.com/en-us/library/cc957131.aspx>

For Active Directory, the administrator has to grant users this permission in the GPO to allow non-administrator domain users the right to perform schedule backup.

- Always run NetBak Replicator as administrator.

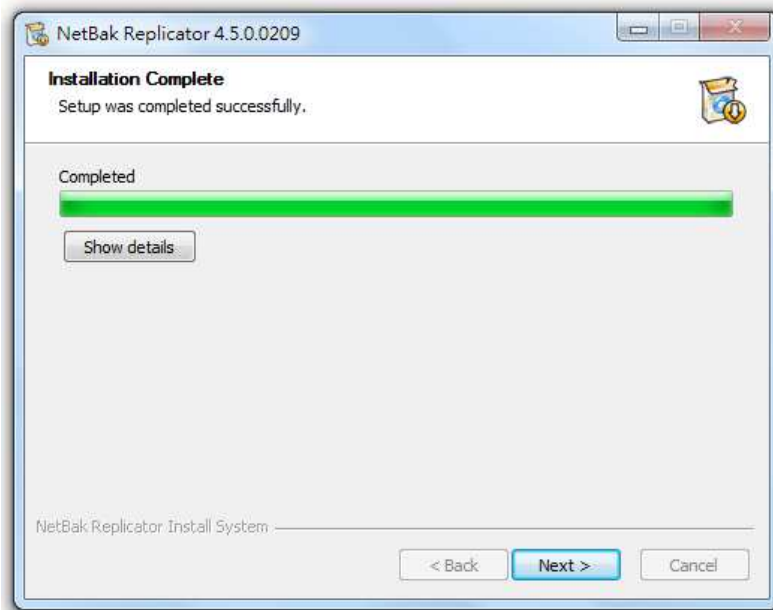
(If unchecked non-administrator users cannot launch NetBak Replicator)

By default, Netbak will run as administrator to allow users to backup system files or files that requires administrator privilege. This is mostly necessary for server backup.

However, it can be disabled if NetBak Replication will be used by users without administrator privileges.

Note: When both options are checked, the second option has higher priority and will set NetBak Replicator to run as administrator

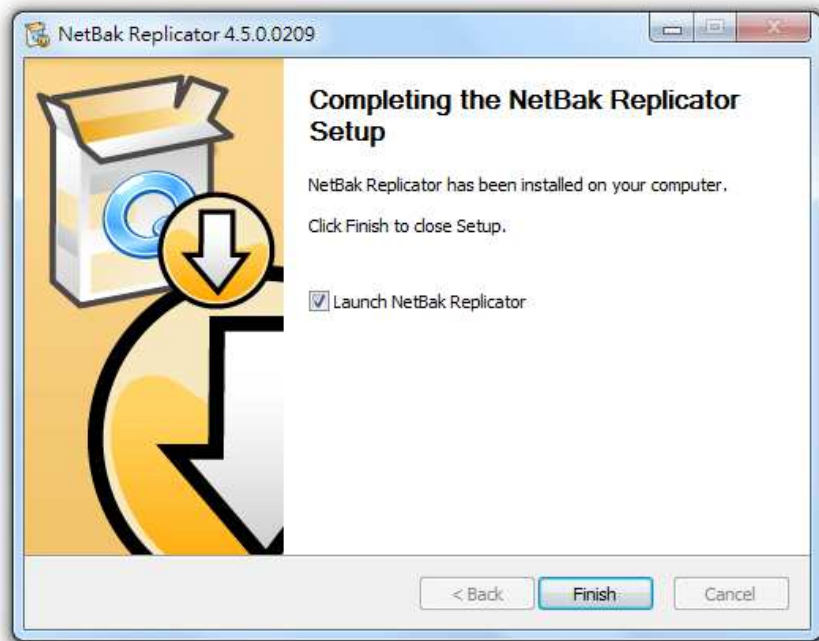
8. When setup completes, click "Next".



9.

It may be necessary to reboot if you installed the QBack Driver. Select whether to reboot your computer immediately or to reboot it later.

Then click "Finish" to complete the installation.



### 2.3 Silent installation by command line

NetBak Replicator can also be installed by command line.

It can be used to deploy it by script or by GPO with Active Directory.

```
QNAPNetBakWindows-4.3.0.exe [/S] [/R=NO] [/A=NO] [/D=instdir]

/S                Enables silent install
/D=instdir        Specifies the install directory
/R=NO            Run as administrator is disabled (default is enabled) - Non-administrator
user cannot run NetBak Replicator
/G=NO            Grant "Log on as a batch job" is disabled (default is enabled) -
Non-administrator user cannot run schedule backup
```

The switches must be in uppercase letters.

The switch /D must be put in the last position without using double quotes, even if the path contains space characters.

Example:

```
QNAPNetBakWindows-4.3.0.exe /S /D=C:\Program Files\NetBak
```

Install NetBak Replicator to the directory C:\Program Files\NetBak and don't show dialog (uses the default settings.)

```
QNAPNetBakWindows-4.3.0.exe /S /G=NO
```

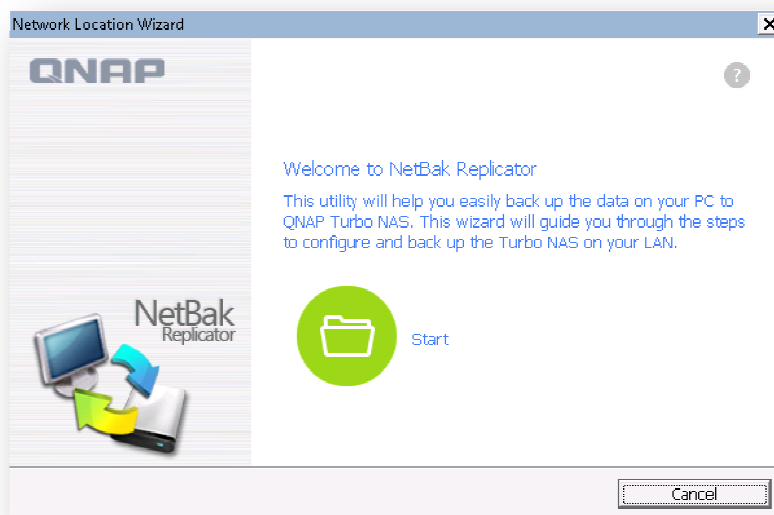
Install NetBak to the default install directory and don't show dialog. (/S)

Also disable "Run as administrator" to allow non-administrator users to start netback replicator. (/G=NO)

Also allow non-administrator users to be able to perform scheduled backup. (default)

## 3 Using NetBak Replicator

### 3.1 First Time wizard:



The First Time Wizard allows setting the first backup destination with a few easy steps:

- Select the NAS
- Select the shared folder

As NetBak Replicator can remember the most commonly used destination, it will be convenient to backup your data to multiple destination if wanted.

Click Start and follow the wizard.

### 3.2 Simple Mode

NetBak Replicator supports "Simple Mode" and "Advanced Mode" for data backup and restore. For simple configuration, you can select "Instant Backup" and "Instant Restore". To use advanced options such as auto-backup, schedule backup and filter settings, select "Advanced Mode" or "Options".



Function	Description
Instant Backup	Back up data to the destination instantly.
Instant Restore	Restore data from the backup instantly.
Advanced Mode	Advanced function of NetBak Replicator, such as auto-backup, schedule backup and NetBak Replicator management.

### 3.3 Instant Backup

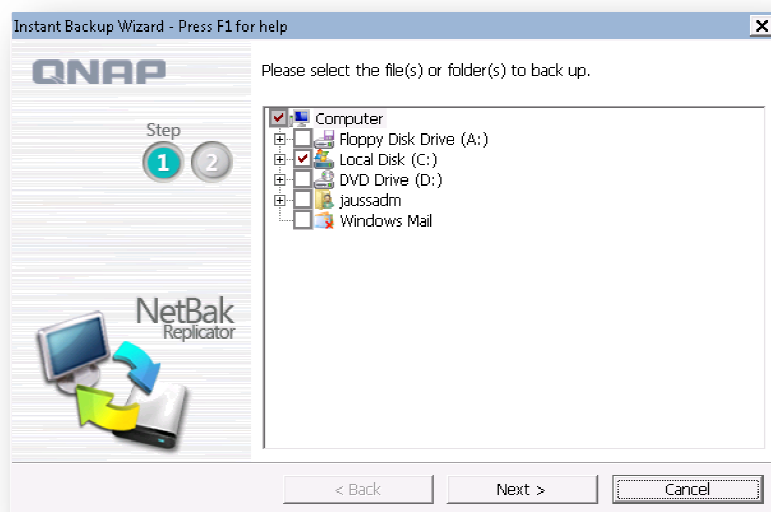


To use instant backup, click  (Instant Backup).

#### Backup Source:

NetBak Replicator supports data backup of computer drives, mail data (Outlook\*, Outlook Express, Windows Mail), Documents, Desktop, Favorites, and Fonts. Select the folders and files to be backed up and then click Next.

\*NetBak Replicator can back up all active personal folder files (PST files) only from Microsoft Outlook located in your computer drives or any network drives.



## Backup destination

The destination can be an internal or external disk drive or a network share. Note that the latest selected location will be displayed.

- Local drives
- Network Location Wizard
- Network Location
- Other Location
- Remove Location

### a. Local drive

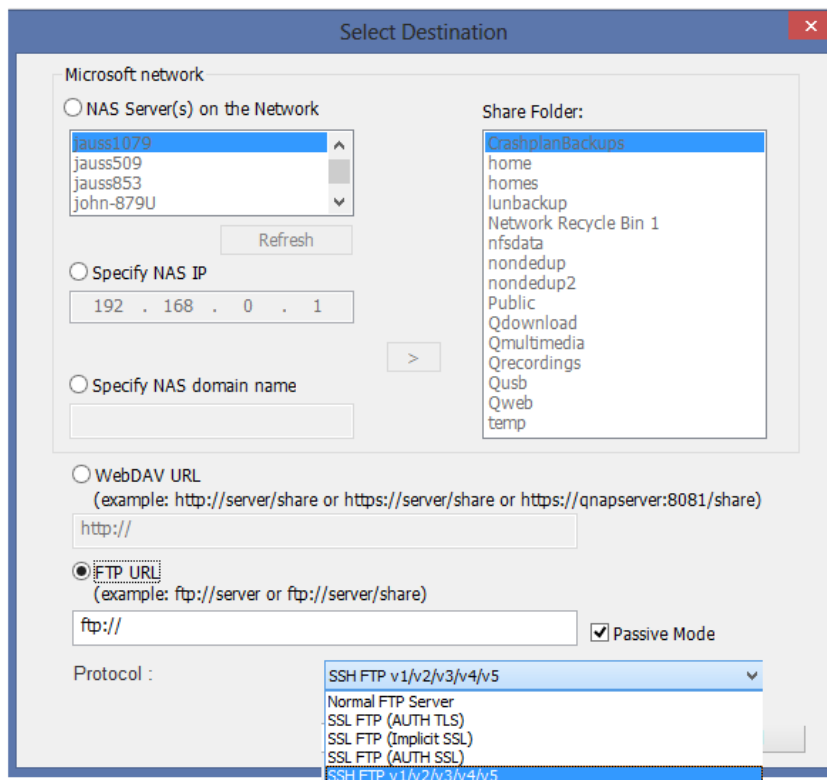
Select a local drive or an external drive letter as the destination.

### b. Network Location Wizard

Start the wizard to add a new backup destination. (Same as First Time Wizard)

### c. Network location

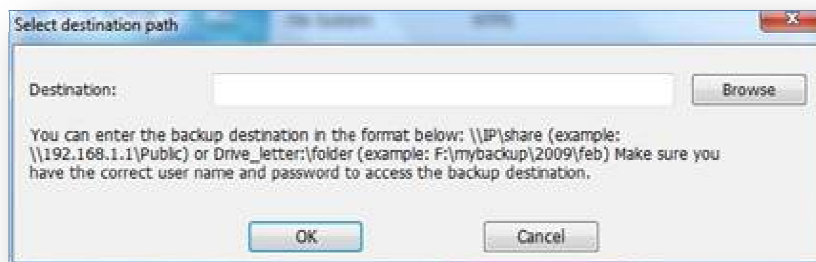
Select "Network Location" to specify a shared folder of QNAP NAS from Microsoft Networking section, a WebDAV folder or an FTP folder as the destination. Make sure your computer is connected to the network when you use this feature.



Function	Description
NAS Server(s) on the Network	All the available NAS servers on the local network will be shown. Select the NAS server and the shared folder where the data will be backed up to.
NAS IP	To specify the destination by NAS IP, select this option and enter the IP address of the NAS. Then click ">" to display the shared folders on the NAS.
NAS domain name	To specify the destination by NAS domain name (DNS), select this option and enter the address of the NAS (example: mynas.mydomain.local). Then click ">" to display the shared folders on the NAS.
WebDAV URL	Specify a WebDAV folder as the destination. Enter the folder directory and click "OK". Make sure you have proper access right to the folder. After clicking "OK", a dialog will pop up for you to enter the username and password. You can also click "Advanced" to configure the proxy settings.
FTP URL	You can specify an FTP folder as the destination. Enter the folder directory and click "OK". Make sure you have proper access right to the folder.
Passive Mode	Check this option to enable FTP passive mode. Try this option if you have FTP connection problems.
Protocol	To use SSL or SSH tunnel for FTP. If SSH is selected, Passive mode will be disabled.
>	Click ">" to view the network shares of the selected NAS.
Refresh	If your NAS cannot be found, click "Refresh" to try again.

#### d. Other location

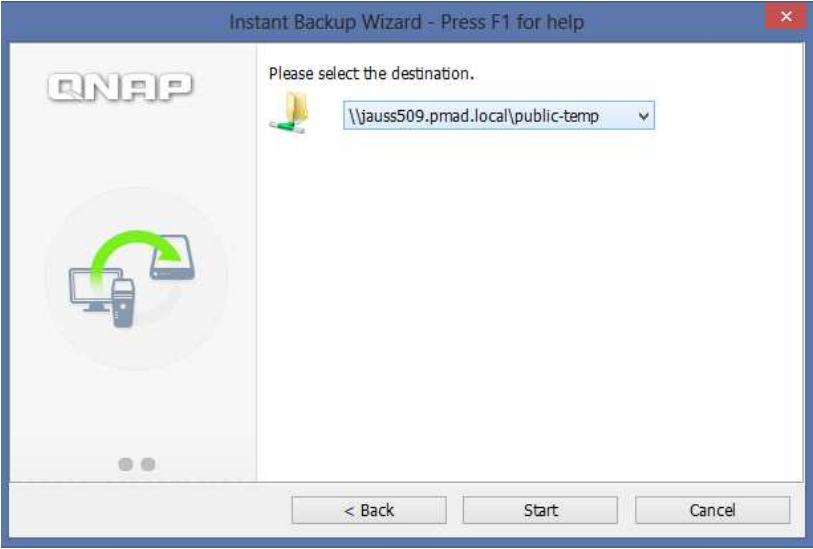
You can select "Other Location" and specify the location of a shared folder.



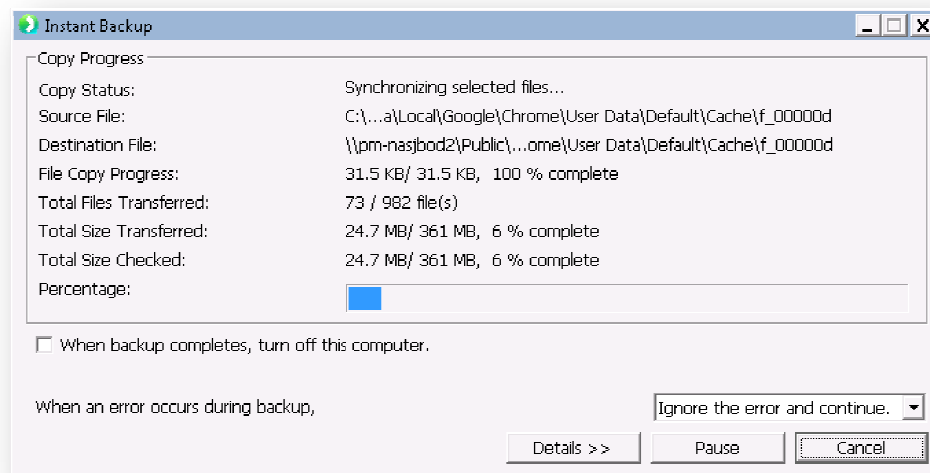
#### e. Remove Location

As NetBak Replicator remembers previous backup destination, it is possible to remove them from the list.

Click "Start" to back up the data.



When backup is in process, the progress will be shown.



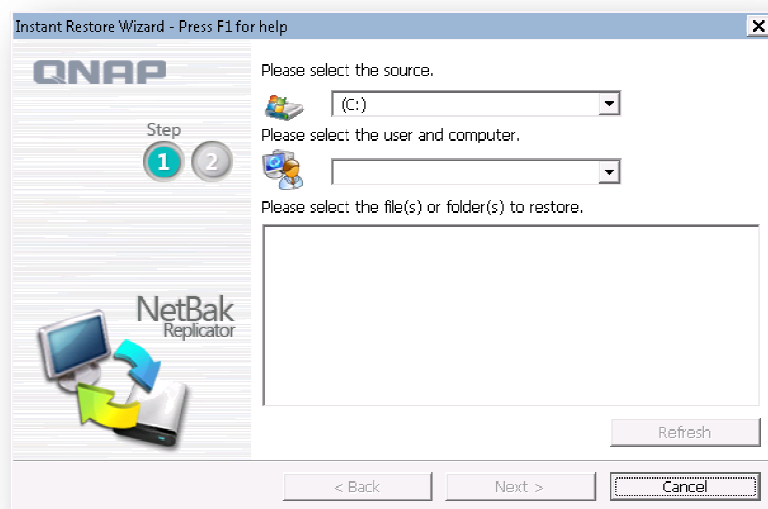
Function	Description
When backup is finished, turn off this computer	Select this option to turn off the computer automatically after backup completes.
Action when an error occurs	If an error occurs during backup, you can choose one of these functions: 1. Display a warning dialog. 2. Ignore the error and continue. 3. Stop the action.
Details	View the backup information. You can mouse over the logs to view the details.
Pause	Pause the backup action.
Finish	Click Finish to exit.

When backup has completed, a summary will be shown. Click "OK" and click "Finish" to exit.

### 3.4 Instant Restore



1. To restore data with NetBak Replicator, click (Instant Restore).
2. Select the data source, the user and computer, and specify the files or folders to restore. Then click "Next". If the data source is a network share or an external drive, make sure it is available.

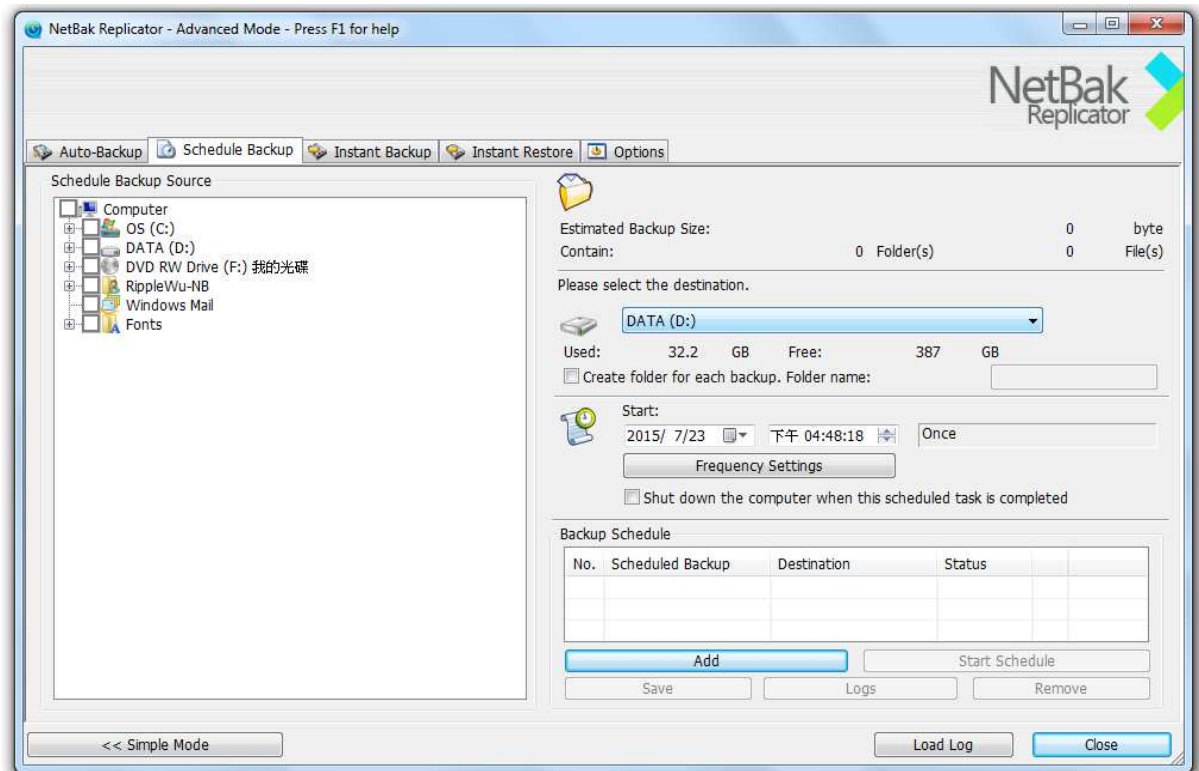


3. Select the restore location and the action to take if a restore file is different from the original file. Click "Start" to begin restore.
4. When the restore completes, a summary will be shown. Click "OK" to continue.
5. Click "Details" to view the restore information, or click "Finish" to exit.

### 3.5 Advanced Mode

NetBak Replicator provides advanced functions such as automatic backup, scheduled backup, filter settings, and backup settings for opened files. To use the advanced mode,

run NetBak Replicator and select  (Advanced Mode).



Function	Description
Auto-Backup	Execute automatic data backup to the destination.
Schedule Backup	Set backup schedules.
Instant Backup	Back up data to the destination Instantly.
Instant Restore	Restore data from the backup Instantly.
Options	Configure advanced backup settings.

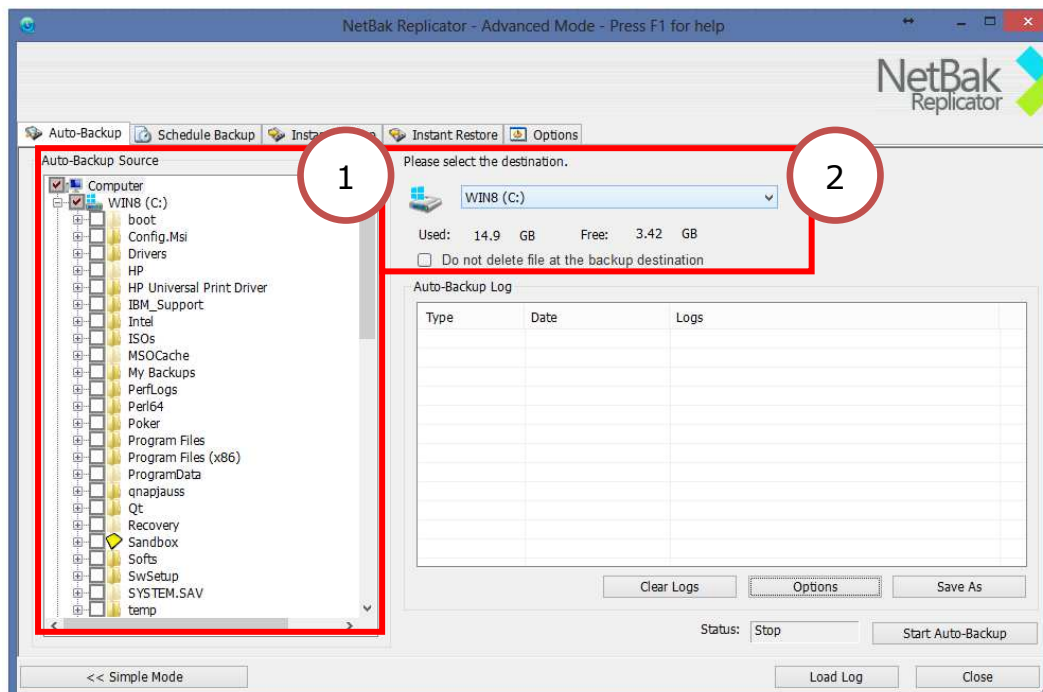
Additionally, scheduled backups can be started by command line:

```
C:\Program Files\QNAP\NetBak\Netbak.exe /backupjob:2
```

### 3.5.1 Auto-Backup

NetBak Replicator supports automatic backup for computer drives, My Documents, Desktop, and Favorites to QNAP QBack devices, local or external disk drives, or network shares. When source files are added, modified or deleted, the changes will be synchronized with the destination automatically. (Opened file option (VSS) is not supported with Auto-Backup)

**Note:** Incremental backup is used for this feature. After the first time data backup, NetBackup Replicator only copies files that have been added or changed since the last backup.



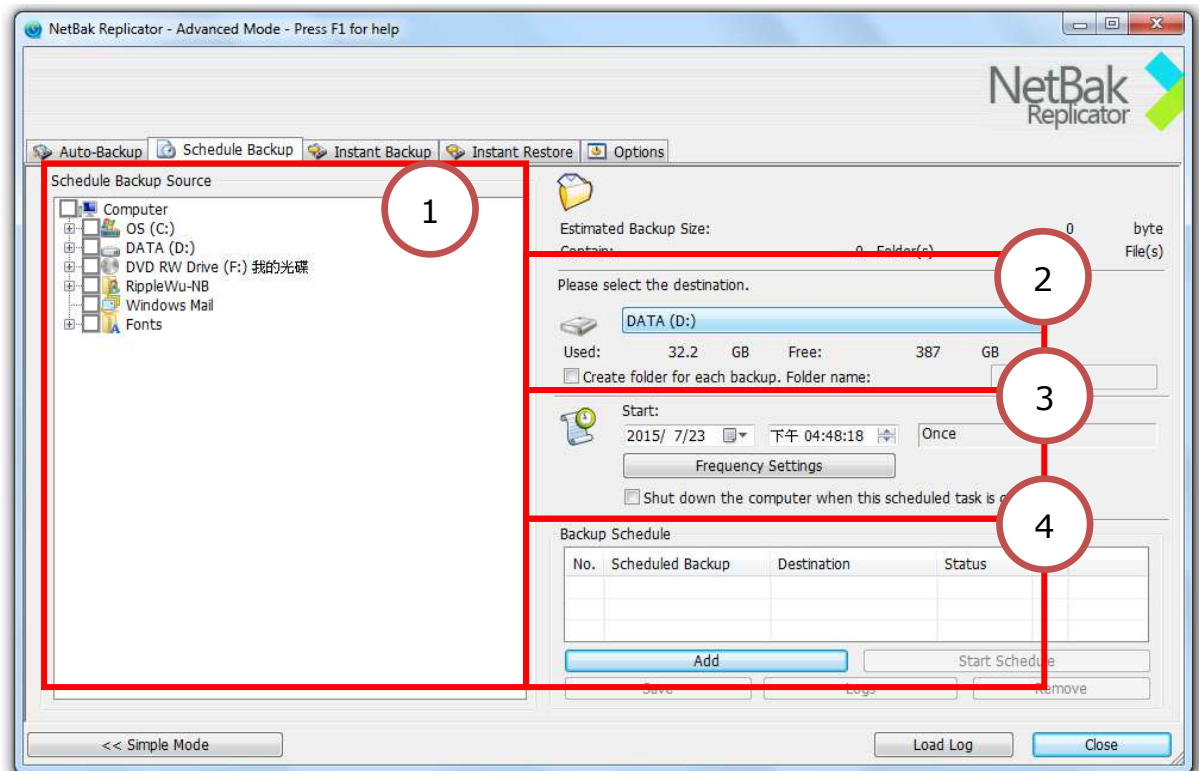
## 1 is the Source

2 is the destination

Function	Description
Source	Select the files and folders for automatic backup.
Destination	Select the destination drive to back up the data to. The destination can be a QNAP QBack device, a local or an external disk drive, or a network share.
Do not delete file at the backup destination.	Select this function and NetBak will not delete files at the backup destination even if the files are deleted locally.
Clear Logs	Mouse over the log to view the details. To clear the logs, click "Clear Logs".
Options	Click "Options" and select to view all event logs or view warning and error logs only.
Save As	To save the backup information, click "Save As" to save the logs as *.log file.
Start Auto-Backup/Stop	To execute automatic backup, click "Start Auto-Backup". If the files have never been backed up before, the backup will start automatically. The backup logs and the status will be displayed. Click "Stop" to disable the auto-backup.
Simple Mode	Return to Simple Mode.
Load Logs	To view the previously saved logs, click "Load Log" and select the log file.
Close	Close NetBak Replicator.

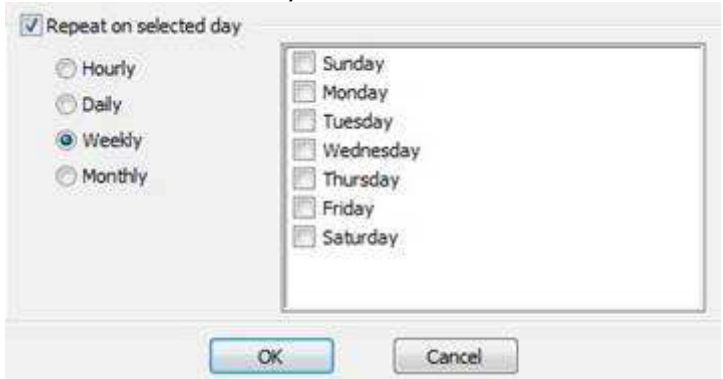
### 3.5.2 Schedule Backup

NetBak Replicator supports scheduled backup to back up specified files and folders from your computer to a QNAP NAS, local or external disk drives, or network shares on a daily, weekly or monthly basis.



- 1 – Source
- 2 – Destination
- 3 – Start time and frequency
- 4 – Job List

Function	Description
Source	Select the folders and files for scheduled backup.
Destination	Select the destination drive to back up the data to. The destination can be a QNAP QBack device, a local or external disk drive, or a network share.
Create a folder for each backup.	<p>If enabled, please enter the folder name and the backup job will create this folder at the destination. The name of that folder will use the backup name field and the backup date.</p> <p>For example:</p>

	<p>NetBakData\MyBackup\YYYY-MM-DD-HH-MM-SS \</p> <p>All of the selected files will be copied to this new folder at the destination.</p> <p>The files copied to that folder will not be available from the restore function, as only a file copy is performed for archiving or keeping a version as a purpose. To restore some files, open the backup destination folder in the NetBakData folder.</p>
Start time and Frequency Setting	<p>Specify the start date and time of the backup schedule. Click "Frequency Settings" to set the schedule settings.</p> <p>Select "Repeat on selected day" and specify the backup schedule. If the option is disabled, the backup schedule will execute once only.</p> 
Backup Schedule	The backup schedules are shown on this list. You can create a maximum of 16 backup schedules.
Add	After choosing a source, destination and set duration, click "ADD" and the action will be added to the job list
Remove	Choose the job from the job list and click "Remove" to delete the selected job.
Save	To change a backup schedule, select a schedule on the list and click Frequency Settings. After changing the settings, click "Save". Click "OK" to confirm the changes or "No" to cancel.
Logs	View the backup logs.
Start Schedule/Stop	<p>Choose a backup schedule and click "Start Schedule" to enable the schedule.</p> <p>To stop a backup schedule, click "Stop".</p>
Simple Mode	Return to Simple Mode
Load Logs	To view previously saved logs, click "Load Logs" and select the log file.
Close	Close NetBak Replicator.

Note: For non-admin user,

### 3.5.3 Instant Backup

To use backup in Advanced Mode, click the Instant Backup tab. This feature is the same as Instant Backup in Simple Mode. Please see [3.3 Instant Backup](#) for the details.

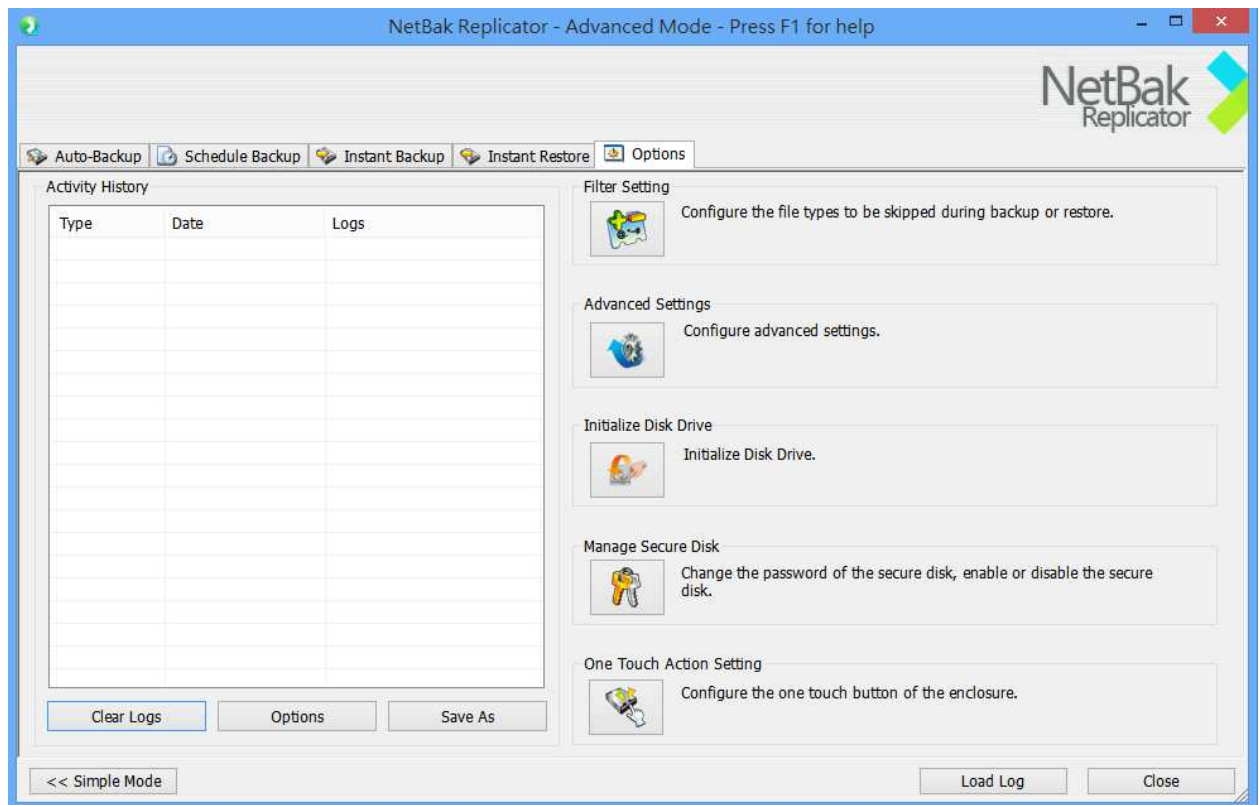
The option “Create a folder for each backup” is the same as for scheduled backup. Please refer to 3.5.2 Schedule Backup for more details.







### 3.5.4 Instant Restore

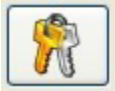


To use restore in Advanced Mode, click the Instant Restore tab. This feature is the same as Instant Restore in Simple Mode. Please refer to [3.4 Instant Restore](#) for more details.

### 3.6 Options


To use the advanced options such as filter settings, one touch action settings, secure disk management, and drive initialization, click "Options" in Simple Mode or go to "Options" in Advanced Mode.

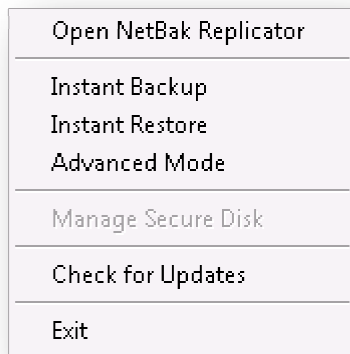


Function	Description
Activity History	This section records all the event logs of NetBak Replicator. You can view, save and clear the logs in this section.
	<p><b>Filter Settings</b></p> <p>You can specify the file size or types to be excluded from backup and restore tasks. Click the icon to configure the settings.</p> <p>To configure file size, enter the value at the Minimum and Maximum file size options and select the value's unit (KB, MB, GB) from the drop down menu.</p> <p>To configure file types, click the boxes in Include or Exclude file types. There are several file types can be selected including Documents, Picture, Video, Application, Music, Temporary File. Move the cursor on each file type to check what filename extensions are contained in that file type.</p> <p>You can also customize specific filename extensions by entering them in the Other with *.extension type1 *, *.extension type2 *, formation. For example:</p> <div> <input checked="" type="checkbox"/> Others           <input type="text" value="*.~*, *.!BW!, *.NU*, ~*.*,"/> </div> <p>Please note that <b>Exclude</b> has priority over <b>Include</b> in this function.</p>
	<p><b>Advanced Settings</b></p> <p>Advanced Settings includes <b>Startup Settings, Backup Settings for Opened Files</b> and <b>E-Mail Notification</b>.</p>
	<p><b>Startup Settings</b></p> <p>This option allows you to enable and disable launching NetBak Replicator at system startup</p>
	<p><b>Backup Settings for Opened Files</b></p> <p>NetBak Replicator allows you to back up opened files and Microsoft VSS-aware applications. This option is enabled by default and is only supported by Schedule Backup and Instant Backup.</p> <p>Enable VSS: This option allows you to back up opened files.</p> <p>Enable VSS Writer (Application Consistency Support): This option allows you to back up VSS-aware applications (such as MS SQL and Hyper-V) to ensure application data consistency.</p> <p>Select "Do not prompt for VSS files inclusion/exclusion during scheduled backup" to back up all VSS files without prompting the user.</p>
	<p><b>E-Mail Notification</b></p> <p>User can enable and disable e-mail notification when Schedule Backup job or Instant Backup job finishes. SMTP server ip or domain name address and SMTP service port have to be specified here. User can also choose to enable SMTP Authentication or SSL/TLS encryption. User can configure up to 2 e-mail addresses to receive notification.</p>
	<p><b>One Touch Action Settings</b></p> <p>Select the action to take when pressing the one touch button on the QNAP <b>QBack S-25</b> and <b>QBack S-35</b> devices. NetBak Replicator will execute instant backup immediately according to your previous settings when you press the button. To disable one touch button,</p>

	<p>select "Do nothing". This option requires QBack Driver installed.</p>
	<p><b>Manage Secure Disk</b> You can change the password of the secure disk, open or close the secure disk in this section.</p> <p>Change Password: Select the secure volume of the external device and enter the old and new password. Select a security question from the drop-down menu or enter a password reminder. *If you have selected to remember the password of the secure disk and want to cancel this option, you can change the password and uncheck the option "Remember the password of Secure Disk". Then restart NetBak Replicator.</p> <p>Open Secure Disk: Select the secure disk volume of the external device and enter the password. Click "OK". If you forgot the password, click "Password Prompt" to view the hint question and answer. This will help you recall the password.</p> <p>Close Secure Disk: Select the secure volume and click "OK".</p>
	<p><b>Initialize an External Device</b> To initialize an external device with NetBak Replicator, follow these steps: <b>Note:</b> NetBak Replicator can only format an external device as an NTFS file system. All the disk data will be cleared after initialization.</p> <ol style="list-style-type: none"> <li>1. Make sure the device is properly connected to your PC. Click the  icon.</li> <li>2. Select the drive corresponding to the external device. Click "Next".</li> <li>3. You can create a public disk and a secure disk on the external device. Enter the size of the public disk or use the slide bar to adjust the space of the public and secure disks. Click "Next".</li> <li>4. Enter a password to enable the secure disk. The password should contain 8-64 alphanumeric characters. Select the security question from the drop-down menu or enter your own password reminder. Click "Next".</li> <li>5. Check the disk settings and click "Next" to start initialization. Select "Remember the password of Secure Disk" to open the secure disk and start auto-backup or schedule backup (if configured) automatically when you plug in the device to the same PC next time.</li> <li>6. Click "OK".</li> <li>7. Wait patiently until the initialization completes. Click "Finish". The public and secure disks will be mounted to your computer automatically.</li> </ol>

### 3.7 Tray Icon Management

When you run NetBak Replicator, an icon  will be shown in the system tray. Right click the icon and you can select Open NetBak Replicator, Instant Backup, Instant Restore, Advanced Mode, Manage Secure Disk, Check for Updates or Exit.



### 3.8 Exit NetBak Replicator

To exit NetBak Replicator, right click the tray icon  and select Exit.

## **4 Technical Support**

QNAP provides dedicated online support and customer service via instant messenger.

You can find the best way for you to contact us on our website:

<http://www.qnap.com/support>